

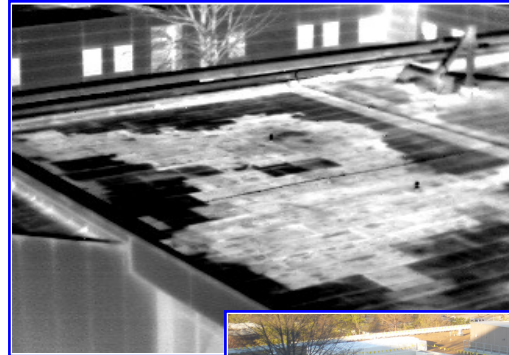


# INFRARED GUYS, Inc.

## Infrared/Thermal Imaging Services

### Roof Inspections:

- ✓ Precisely Identify Problem Areas
- ✓ Avoid Unnecessary Repairs or Roof Replacement
- ✓ Baseline Roof Condition for Future Insurance Claims
- ✓ Due Diligence Testing
- ✓ Walk-On or Aerial Surveys



*Lighter Color is Thermal Anomaly Indicating Area of Wet Insulation*



### How Infrared Roof Inspection Works:

During daylight hours the sun heats the roof structure. After sunset, the roof begins to cool, but areas of wet or moist insulation hold heat longer. During this time there is a window of opportunity when a skilled thermographer will be able to image these warmer areas. The results can be quite dramatic. We then use a moisture meter to verify the problem areas, and these are marked with high-visibility paint. A detailed report is also provided.

### Who we are:

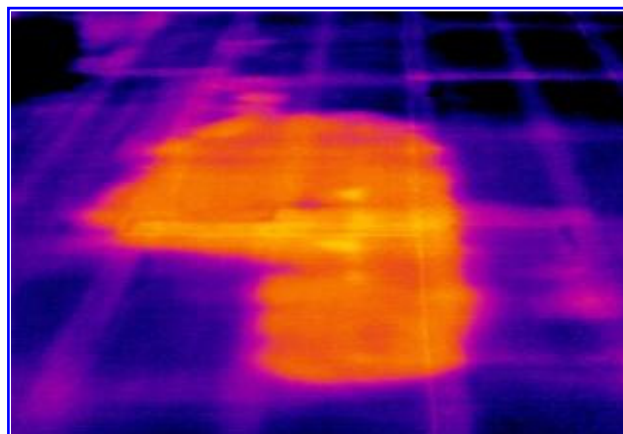
A group of trained and experienced professionals, equipped with top-of-the-line equipment. We have been doing infrared/thermal imaging since 2002, beginning with roof inspections. We are independent third-party consultants, not roofing contractors, so we have no vested interest in what we find.

### We also do:

- Electrical Inspections
- Mechanical Inspections
- Building Envelope Inspections
- Residential Inspections

### We Have Done IR Work For:

- Hilton Hotels/Embassy Suites
- Simon Property Group
- McKesson Pharmaceutical
- Rock Tenn
- Duke Realty
- E\*TRADE -- and many others, large and small.



*Area of wet insulation cools off more slowly than surrounding dry area. Higher temperatures show as lighter color in an infrared image.*

**Be Proactive!**

**Call us for a no-cost initial consultation and proposal.**

**Vaughan Simmons: 404-569-3465 / Shawn Phillips: 404-791-7069**

**www.InfraredGuys.com**